

CDX2 Antibody
Rabbit mAb
Catalog # AP90176

Specification

CDX2 Antibody - Product Information

Application	WB, IHC, FC, ICC
Primary Accession	Q99626
Reactivity	Rat
Clonality	Monoclonal
Other Names	
caudal type homeo box transcription factor 2; Homeobox protein CDX-2; Caudal-type homeobox protein 2; CDX3	
Isotype	Rabbit IgG
Host	Rabbit
Calculated MW	33520 Da

CDX2 Antibody - Additional Information

Dilution	WB~~1:1000 IHC~~1:100~500 FC~~1:10~50 ICC~~N/A
Purification	Affinity-chromatography
Immunogen	A synthesized peptide derived from human CDX2
Description	Involved in the transcriptional regulation of multiple genes expressed in the intestinal epithelium. Important in broad range of functions from early differentiation to maintenance of the intestinal epithelial lining of both the small and large intestine.
Storage Condition and Buffer	Rabbit IgG in phosphate buffered saline , pH 7.4, 150mM NaCl, 0.02% sodium azide and 50% glycerol. Store at +4°C short term. Store at -20°C long term. Avoid freeze / thaw cycle.

CDX2 Antibody - Protein Information

Name CDX2

Synonyms CDX3

Function

Transcription factor which regulates the transcription of multiple genes expressed in the intestinal epithelium (By similarity). Binds to the promoter of the intestinal sucrase-isomaltase SI and

activates SI transcription (By similarity). Binds to the DNA sequence 5'-ATAAAACTTAT-3' in the promoter region of VDR and activates VDR transcription (By similarity). Binds to and activates transcription of LPH (By similarity). Activates transcription of CLDN2 and intestinal mucin MUC2 (By similarity). Binds to the 5'-AATTTTTTACAACACCT-3' DNA sequence in the promoter region of CA1 and activates CA1 transcription (By similarity). Important in broad range of functions from early differentiation to maintenance of the intestinal epithelial lining of both the small and large intestine. Binds preferentially to methylated DNA (PubMed:28473536).

Cellular Location

Nucleus {ECO:0000250|UniProtKB:P43241}.

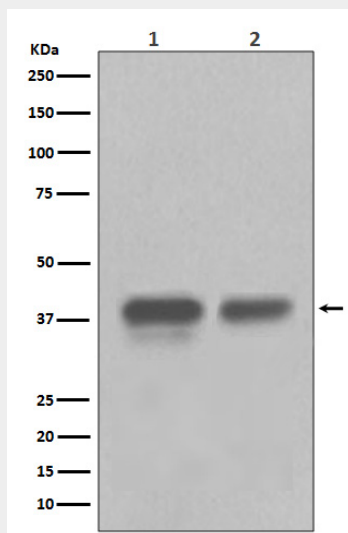
Tissue Location

Detected in small intestine, colon and pancreas.

CDX2 Antibody - Protocols

Provided below are standard protocols that you may find useful for product applications.

- [Western Blot](#)
- [Blocking Peptides](#)
- [Dot Blot](#)
- [Immunohistochemistry](#)
- [Immunofluorescence](#)
- [Immunoprecipitation](#)
- [Flow Cytometry](#)
- [Cell Culture](#)

CDX2 Antibody - Images

Western blot analysis of CDX2 in (1) HEK293 cell lysate; (2) Colon cancer lysate.